



mission  
crossing

LANE4



**1,195 SF**  
**AVAILABLE**

# MISSION CROSSING

## 2nd Gen Restaurant Space for Lease

61<sup>ST</sup> ST & METCALF AVE • MISSION, KS

**ANDREW SANDBURG**

816.268.9111 / [asandburg@lane4group.com](mailto:asandburg@lane4group.com)

**BRANDON BUCKLEY**

816.268.9112 / [bbuckley@lane4group.com](mailto:bbuckley@lane4group.com)

## MISSION CROSSING

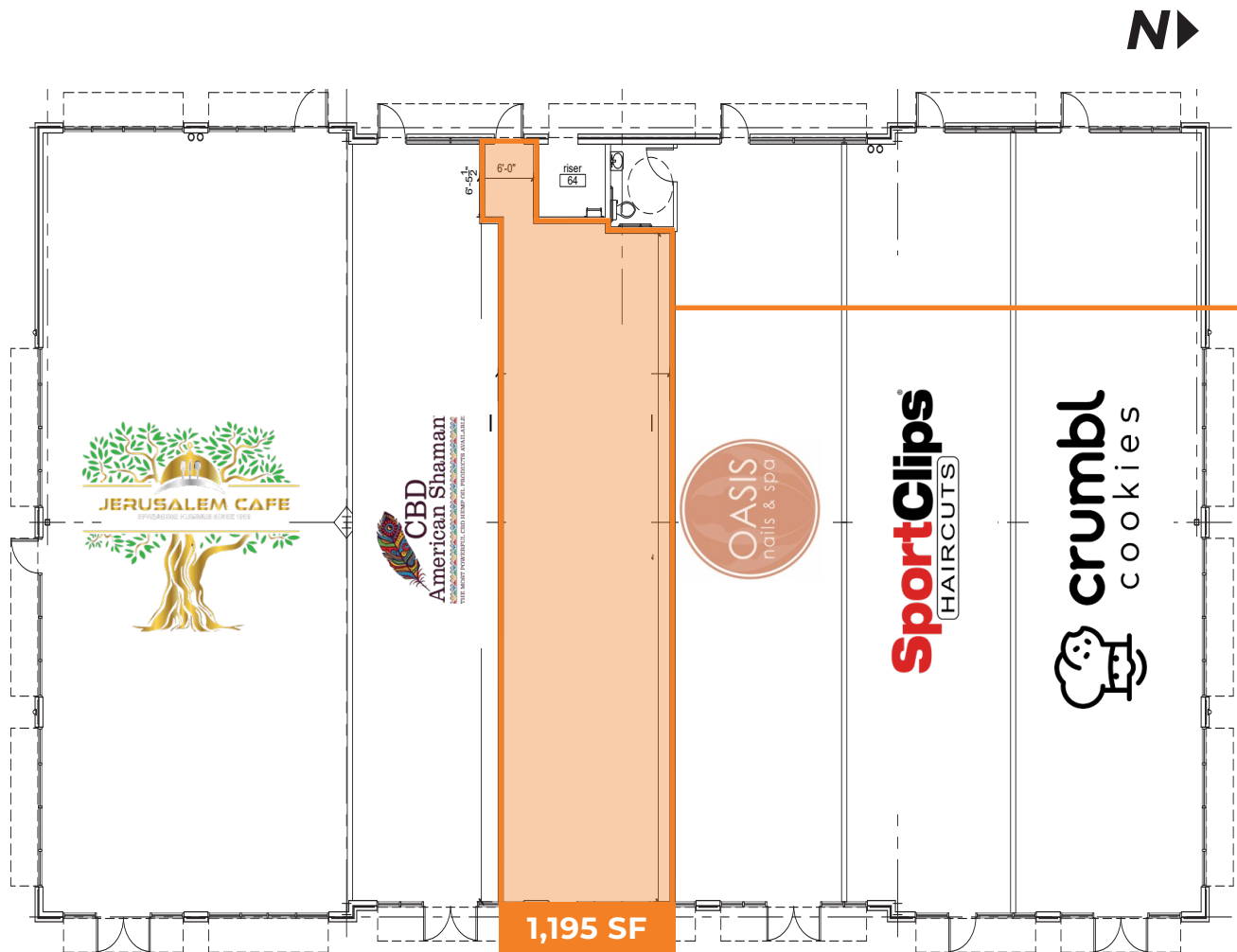
- 1,195 SF 2nd gen restaurant space for lease
- Strong tenant mix in a traditional retail development:  
Jerusalem Cafe, Chick-fil-A, Culver's, Crumbl, Toppers Pizza, and Oasis Nails
- Adjacent to Target and Hy-Vee
  - Target location is the #5 most visited in Kansas (Source: Placer.ai 2025)
- Over 42,000 CPD; located just minutes south of I-35

DEMOGRAPHICS	1 MILE	3 MILE	5 MILE
Population	10,588	93,489	258,448
Avg. HH Income	\$100,195	\$109,666	\$119,423
# of Businesses	856	4,142	12,515
# of Employees	12,329	50,151	156,957

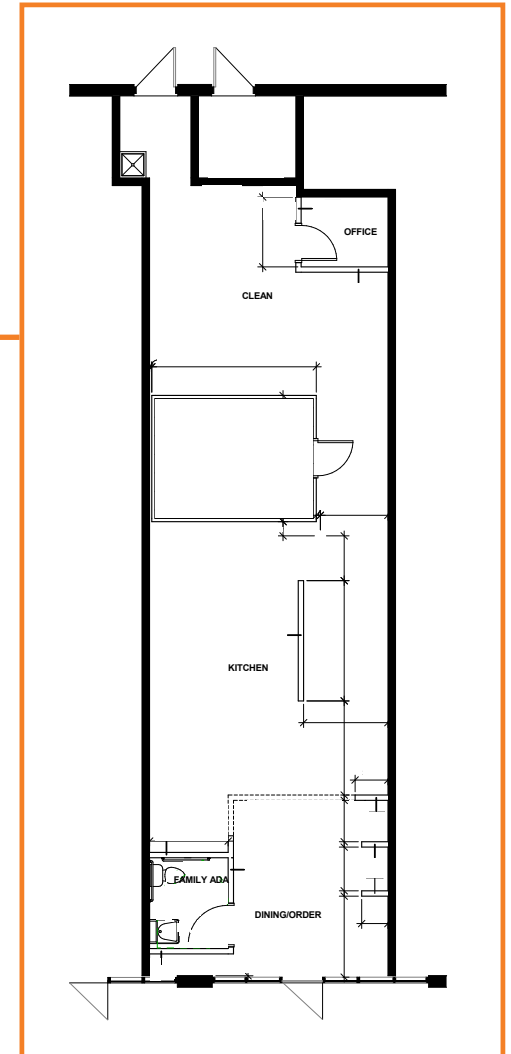




## SITE PLAN &amp; FLOOR PLAN



Metcalf Ave





# AERIAL OVERVIEW



mission  
crossing

LANE4

