

2nd Gen Restaurant Space

# Mission Crossing

61st & METCALF | MISSION, KANSAS

1,195 SF



SPENCER STEWART

816.268.9103 | sstewart@lane4group.com

LANE4

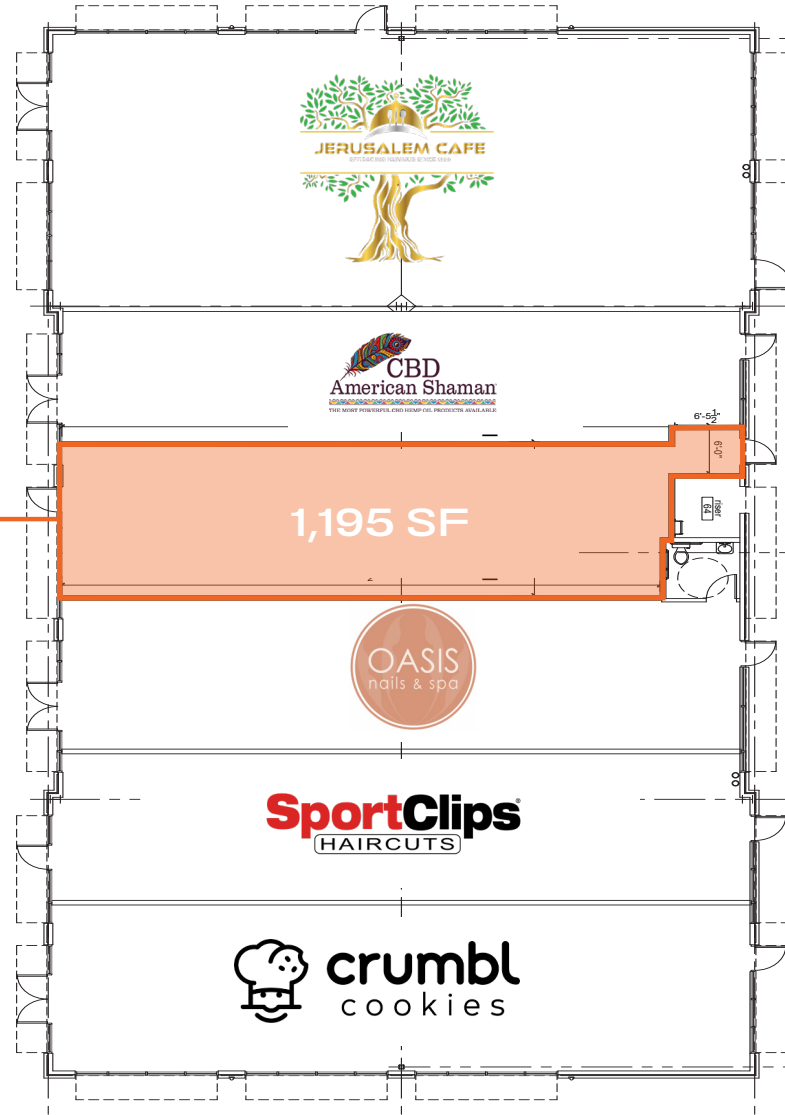
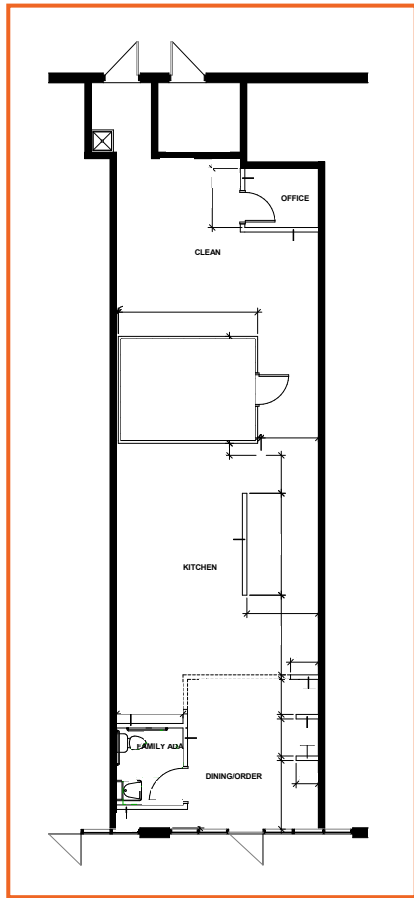
## Property Highlights

- 1,195 SF 2nd gen restaurant space for lease
- Strong tenant mix in a traditional retail development: Jerusalem Cafe, Chick-fil-A, Culver's, Crumbl, and Oasis Nails
- Adjacent to Target and Hy-Vee
- This Target is the #5 most visited in Kansas (Source: Placer.ai 2025)
- Over 42,000 CPD; located just minutes south of I-35

Demographics	1 MI.	3 MI.	5 MI.
Population	10,588	93,489	258,448
Avg. HH Income	\$100,195	\$109,666	\$119,423
# of Businesses	856	4,142	12,515
# of Employees	12,329	50,151	156,957



# Site Plan & Floor Plan





Johnson Dr

23,671 CPD

Shawnee Mission North High School

61st St

**SITE**

- crumbl cookies
- SportClips (HAIRCUTS)
- OASIS nails & spa
- CBD American Shaman

11,400 CPD

Metcalf Ave 40,443 CPD

160,000+ SF Office Park

Shawnee Mission Pkwy

Downtown Mission

THE LOCAL

200-Unit Luxury Apartments

Sylvester Powell Jr. Community Center

Johnson County North-east Office

- KANSAS SAMPLER
- Chipotle
- NOTHING BUT THE CAKES
- Mud Pie
- WING STOP



DOLLAR TREE

Pepperjax Grill

Martway Dr



WELSTONE At Mission Crossing

HyVee



Lamar Ave

