



1,408 -  
6,968 ± SF

AVAILABLE

# CRACKERNECK PLAZA SHOPPING CENTER

19321 EAST HIGHWAY 40 • RETAIL CENTER • INDEPENDENCE, MO

**ANDREW SANDBURG**

816.268.9111 / [asandburg@lane4group.com](mailto:asandburg@lane4group.com)

**SPENCER STEWART**

816.268.9103 / [sstewart@lane4group.com](mailto:sstewart@lane4group.com)



- 55,000 SF retail center with a strong mix of retail, restaurant, and everyday service providers
- Immediate access to 3 major highways (I-70, I-470, 40 Hwy) to conveniently travel the metro
- Ample parking

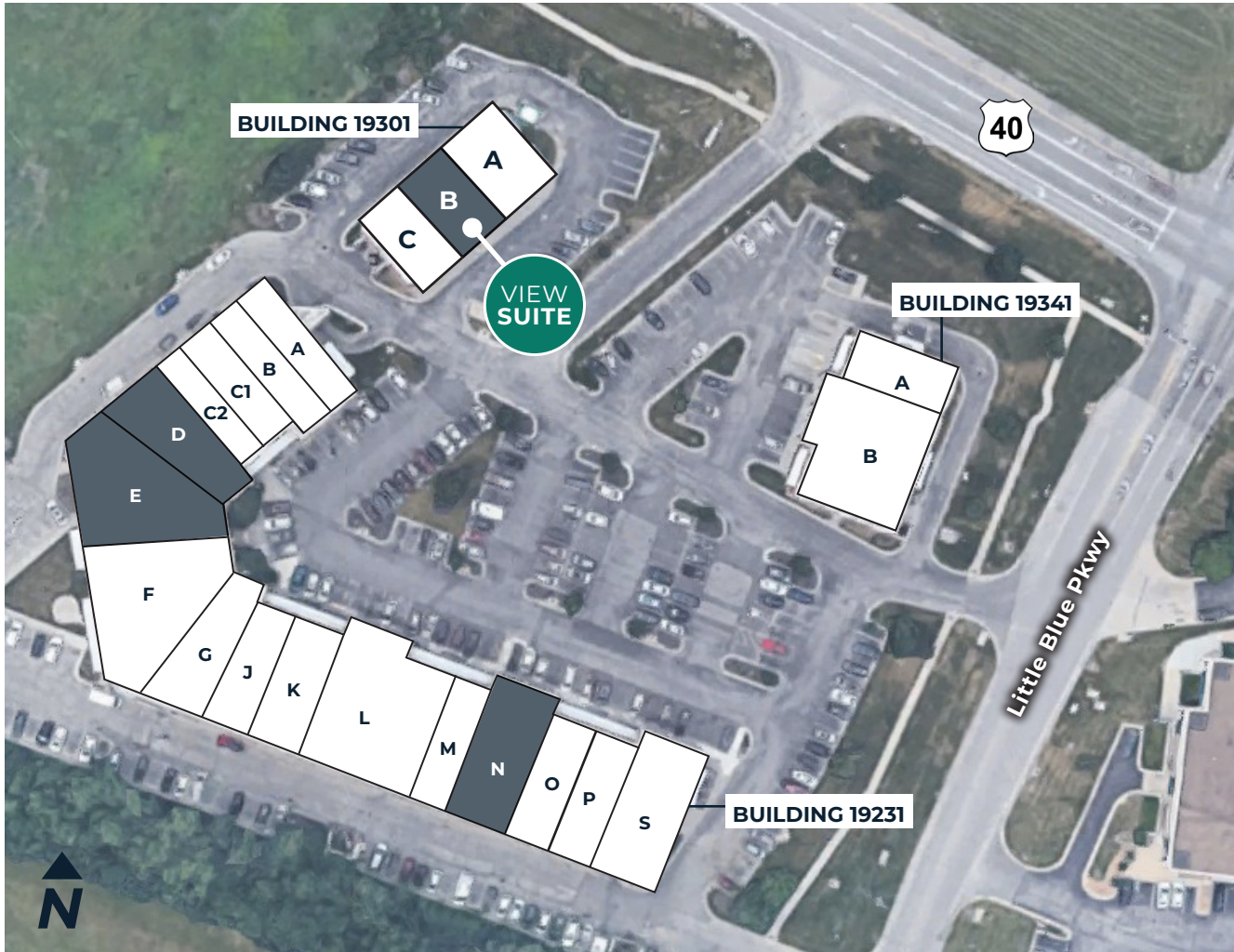
**MONUMENT SIGNAGE AVAILABLE**



DEMOGRAPHICS	1 MI	3 MI	5 MI
Population	6,568	47,613	126,349
Daytime Employees	8,671	45,161	120,422
Avg. HH Income	\$110,159	\$106,443	\$97,117
Median Home Value	\$280,199	\$228,724	\$214,433



# SITE PLAN



### BUILDING 19301

A	Dentist	
B	AVAILABLE	1,408 ± SF
C	Coconut Beach Tan	

### BUILDING 19341

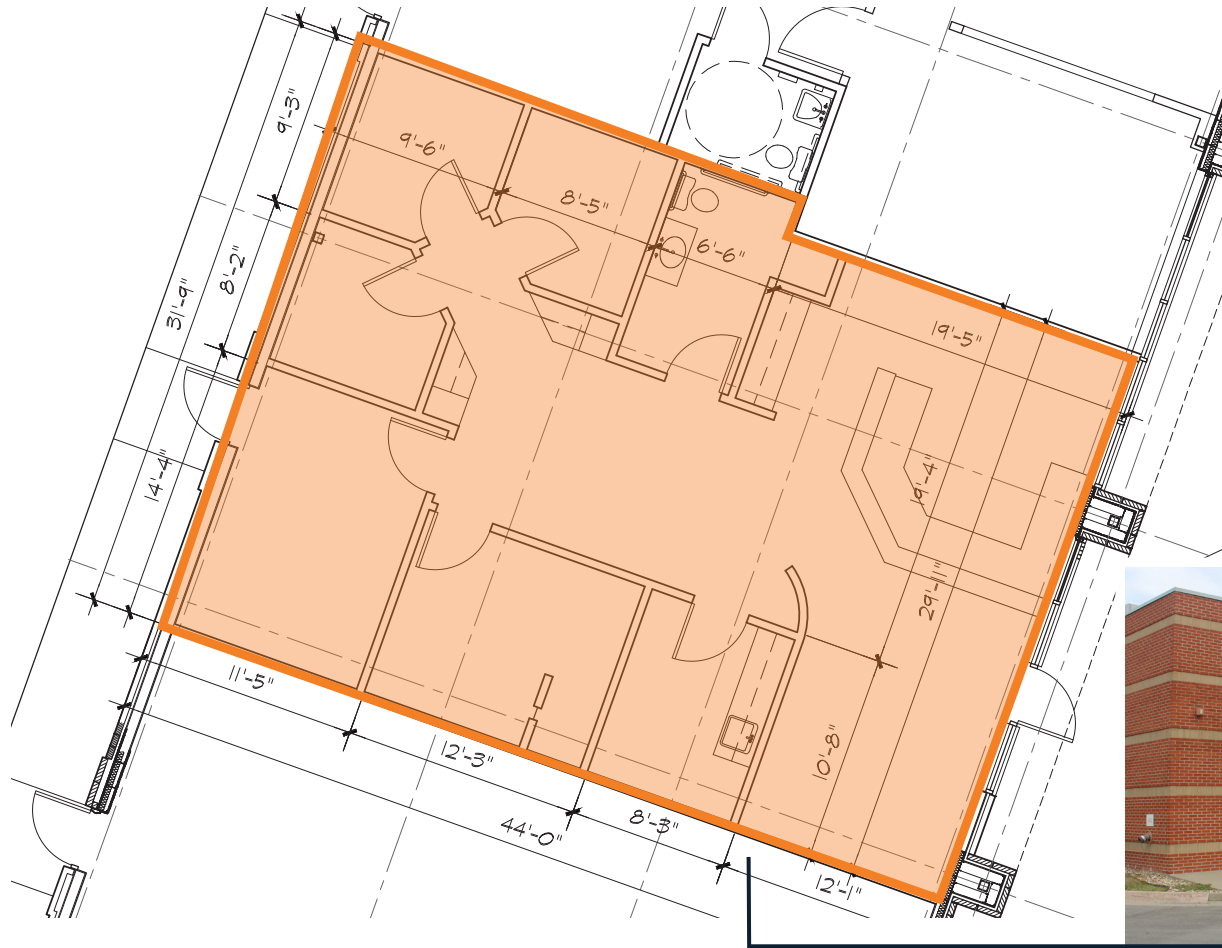
A	Greater KC Public Safety Credit Union	
B	From the Earth	

### BUILDING 19321

A	Thai Kitchen	
B	Papa Johns	
C1	State Farm Insurance	
C2	CBD American Shaman	
D	AVAILABLE	2,894 ± SF
E	AVAILABLE	4,074 ± SF
F	Bolero Salon & Spa	
G	Alissa's Floral	
J	Alissa's Interior Design	
K	9Round Boxing	
L	First Watch	
M	Shoe Express	
N	AVAILABLE	1,948 ± SF
O	<i>New Tenant Coming Soon!</i>	
P	Spectrum Paint	
S	Casa Mexico	

# SUITE B - 1,408 SF

Building 19301

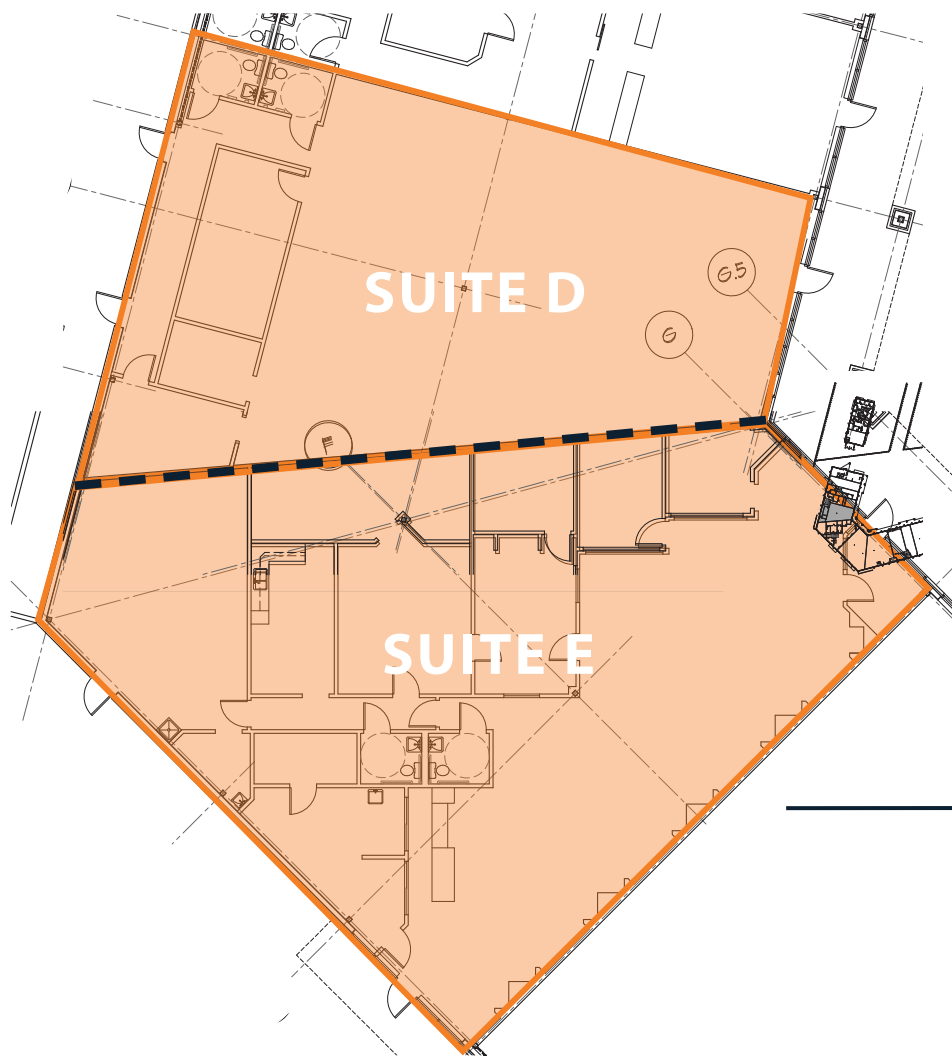


[VIEW SUITE](#)

# SUITE D - 2,894 SF

# SUITE E - 4,074 SF

Building 19321



Combine up to 6,968 SF

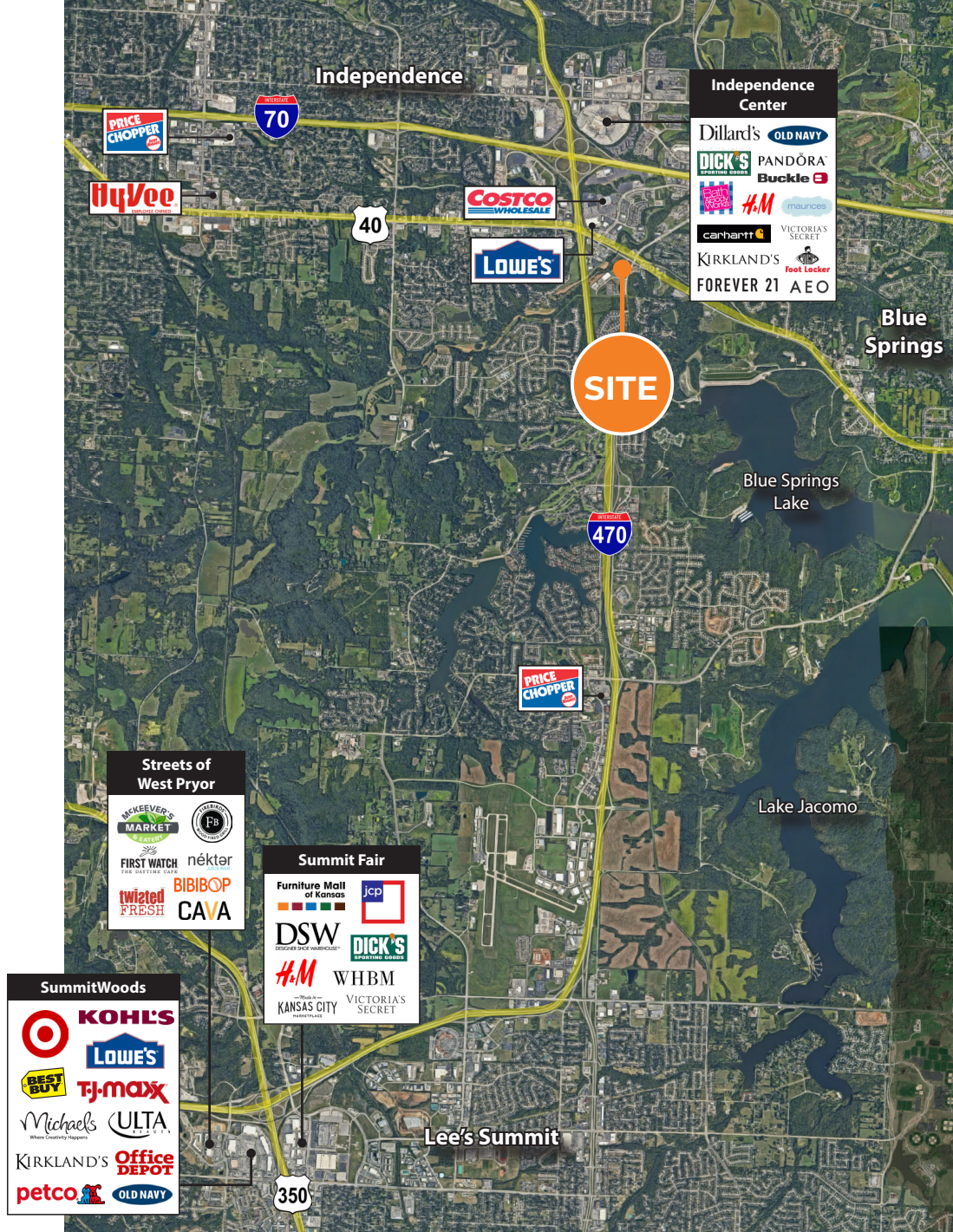


# SUITE N - 1,948 SF

Building 19321







## EASTERN JACKSON COUNTY