

1,229 & 8,215 SF
AVAILABLE



LIMIT STREET PLAZA | LEAVENWORTH, KS

RETAIL SPACE FOR LEASE

2920 S 4TH ST • RETAIL CENTER • LEAVENWORTH, KS

ANDREW SANDBURG
816.268.9111 / asandburg@lane4group.com

PROPERTY HIGHLIGHTS

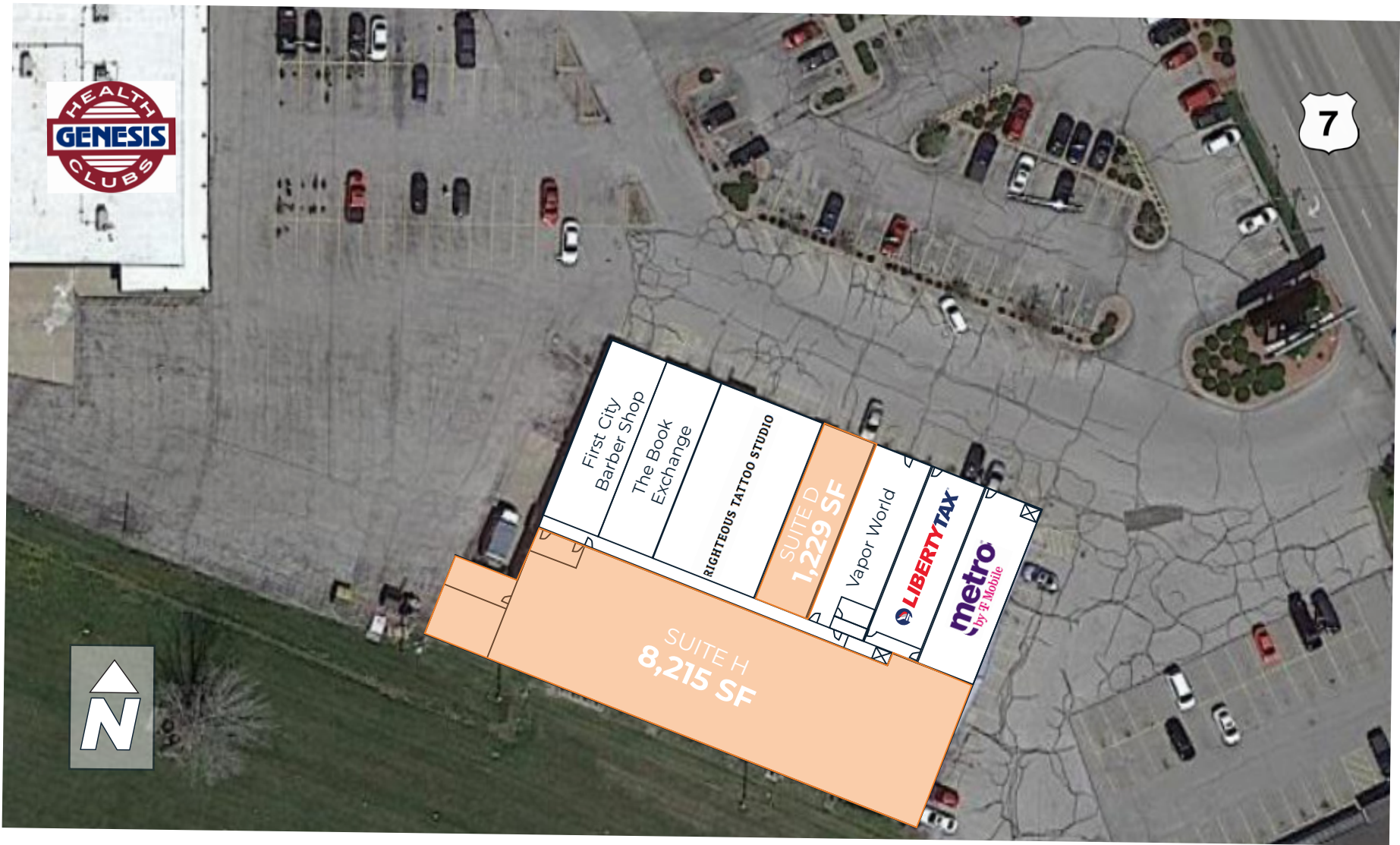
- 1,229 & 8,215 SF available for lease
- Direct visibility to 4th Street with over 16,900 CPD
- Located in Leavenworth’s main retail corridor
- Shadow anchored by Genesis Health Club
- Co-tenants include Aarons, Liberty Tax, and other service providers

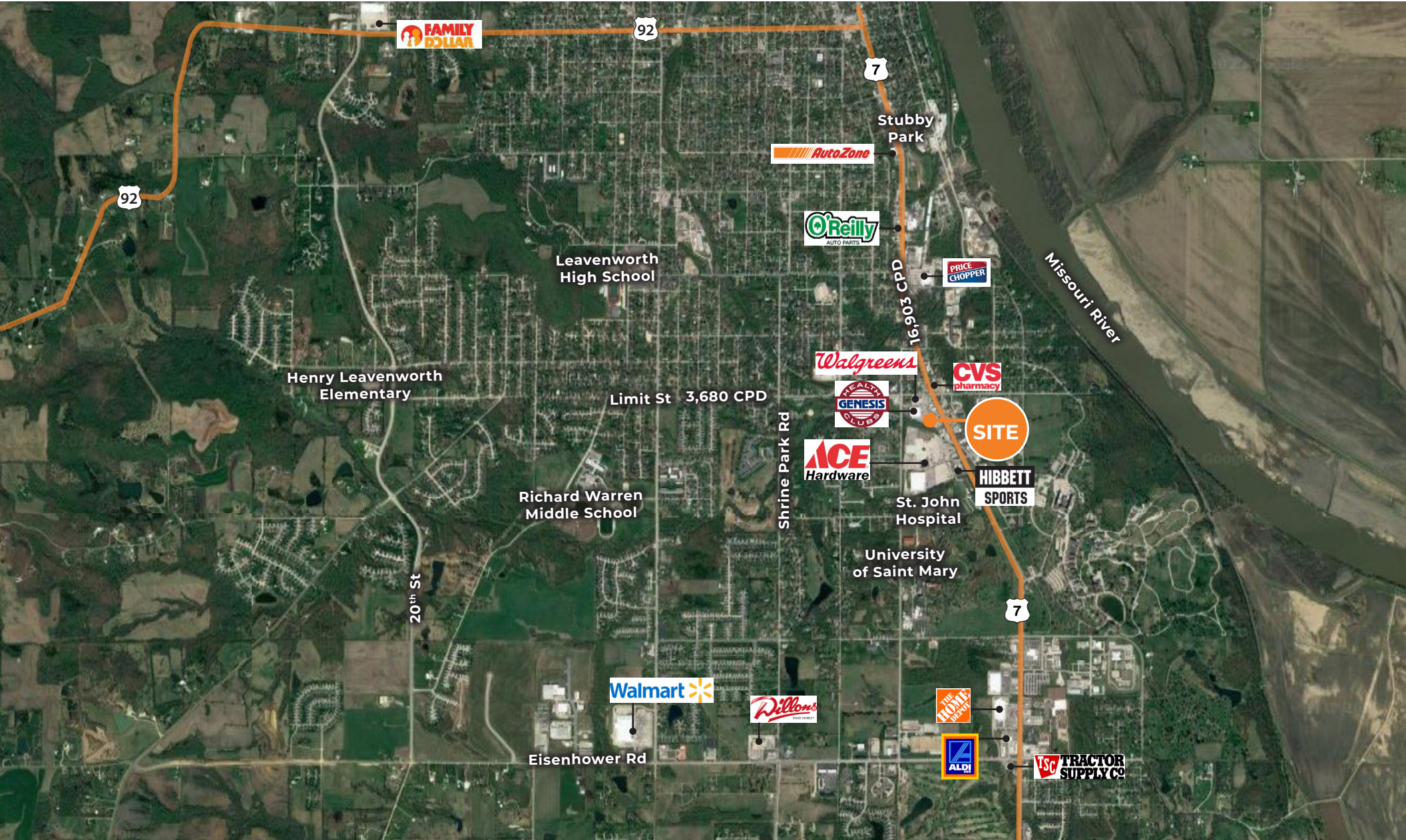
DEMOGRAPHICS

	1-MILE RADIUS	3-MILE RADIUS	5-MILE RADIUS
POPULATION	5,189	34,319	50,204
AVG. HH INCOME	\$64,677	\$84,461	\$92,551
# OF BUSINESSES	185	1,131	1,380
# OF EMPLOYEES	185	13,265	19,962



SITE PLAN





INTERIOR PHOTOS | SUITE D

