

1,100 - 3,960 SF

AVAILABLE



DAVITA CENTER

RETAIL/OFFICE SPACE FOR LEASE

831 EISENHOWER RD • RETAIL CENTER • LANSING, KS

CHASE GLAESER

816.268.9110 / cglaeser@lane4group.com

ANDREW SANDBURG

816.268.9111 / asandburg@lane4group.com

PROPERTY HIGHLIGHTS

- Retail and Office Space available for lease
 - **1,100 SF** former salon space
 - **1,320 SF** former office space
 - Spaces contiguous up to **2,420 SF**
 - **3,960 SF** former chiropractic/physical therapy space
- Great visibility to Eisenhower Rd with over 14,000 CPD
- Ideally positioned between Main St retail corridor and anchor grocers
- Located in affluent neighborhood with over \$116,000 average HH income within 1-mile of center

DEMOGRAPHICS	1 MI	3 MI	5 MI
Population	5,122	29,222	45,571
Avg. HH Income	\$116,732	\$98,225	\$91,670
# of Businesses	130	724	1,330
# of Employees	2,129	10,168	15,826



SITE PLAN

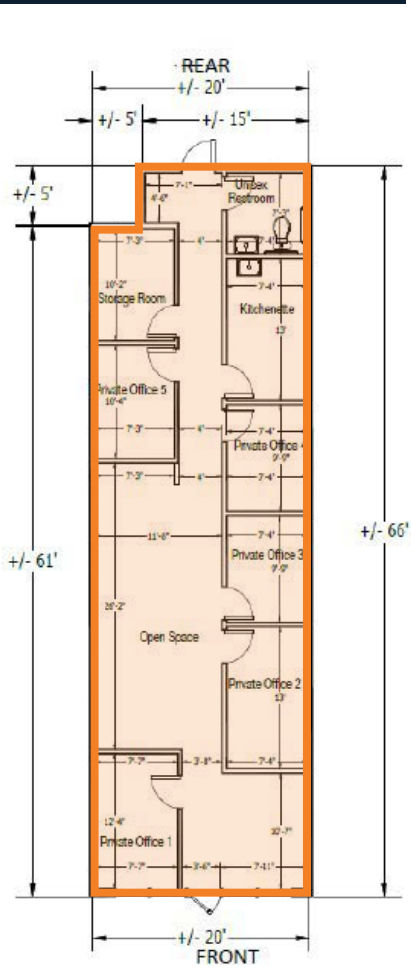
AVAILABILITY

SUITE	SF
C*	1,100
D*	1,320
I	3,960

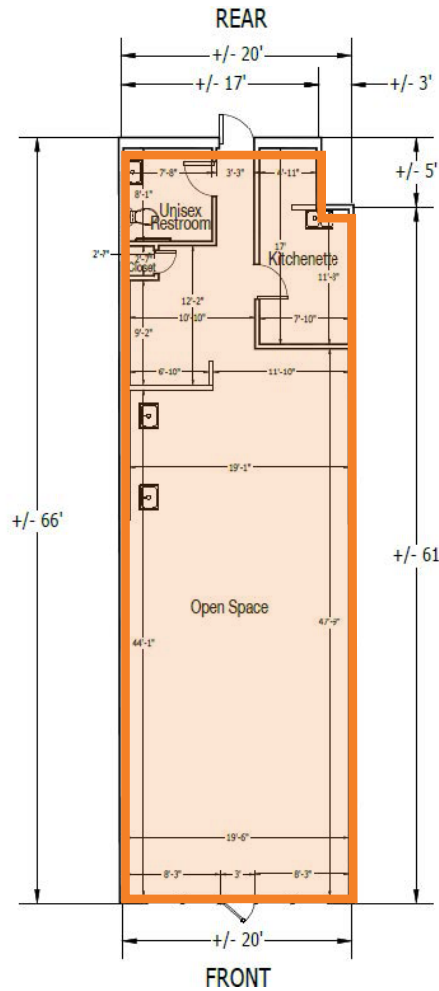
*Combine up to 2,420 SF



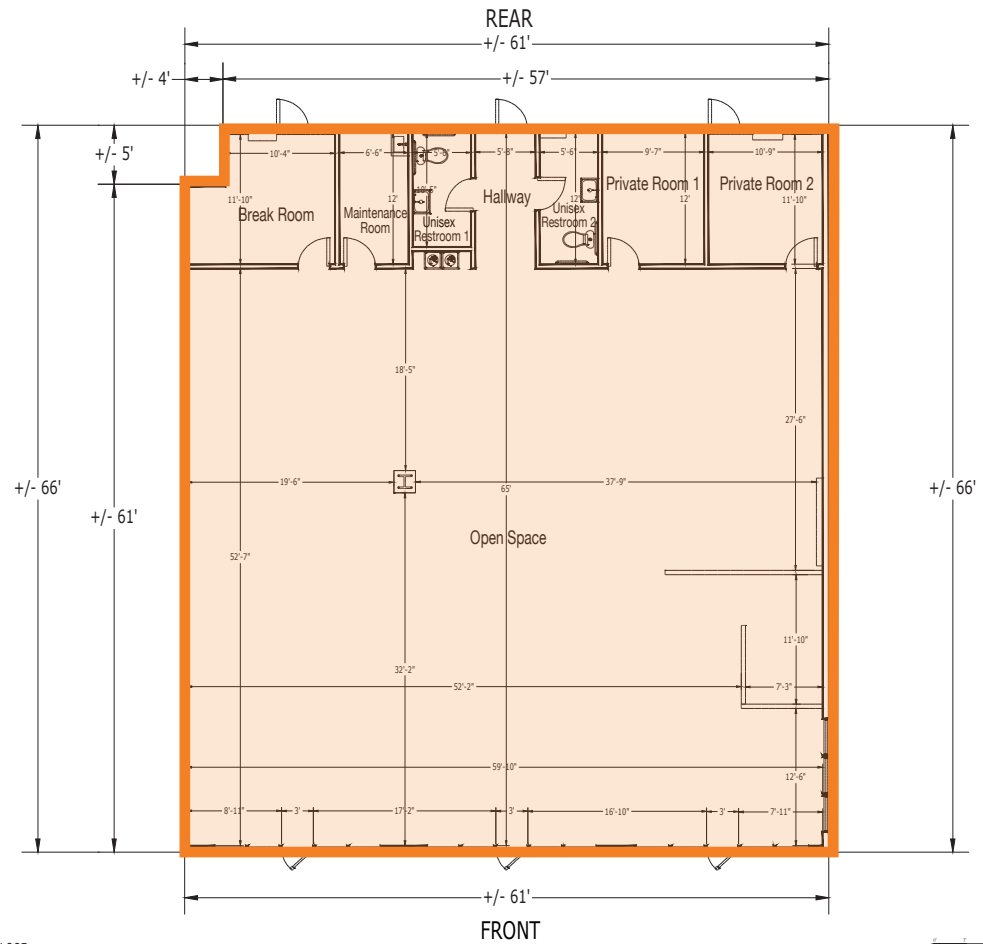
FLOOR PLANS



SUITE D
1,320 SF



SUITE C
1,100 SF



SUITE I
3,960 SF

