

LEE'S SUMMIT DOWNTOWN MARKET PLAZA

Planned Mixed-Use Project in the Heart of Lee's Summit, MO in the Kansas City MSA



Restaurant, Entertainment, Hotel & Retail Opportunities Available!

FARMER'S MARKET • EVENT SPACE • BOUTIQUE HOTEL • RESTAURANT • RETAIL • MULTI-FAMILY

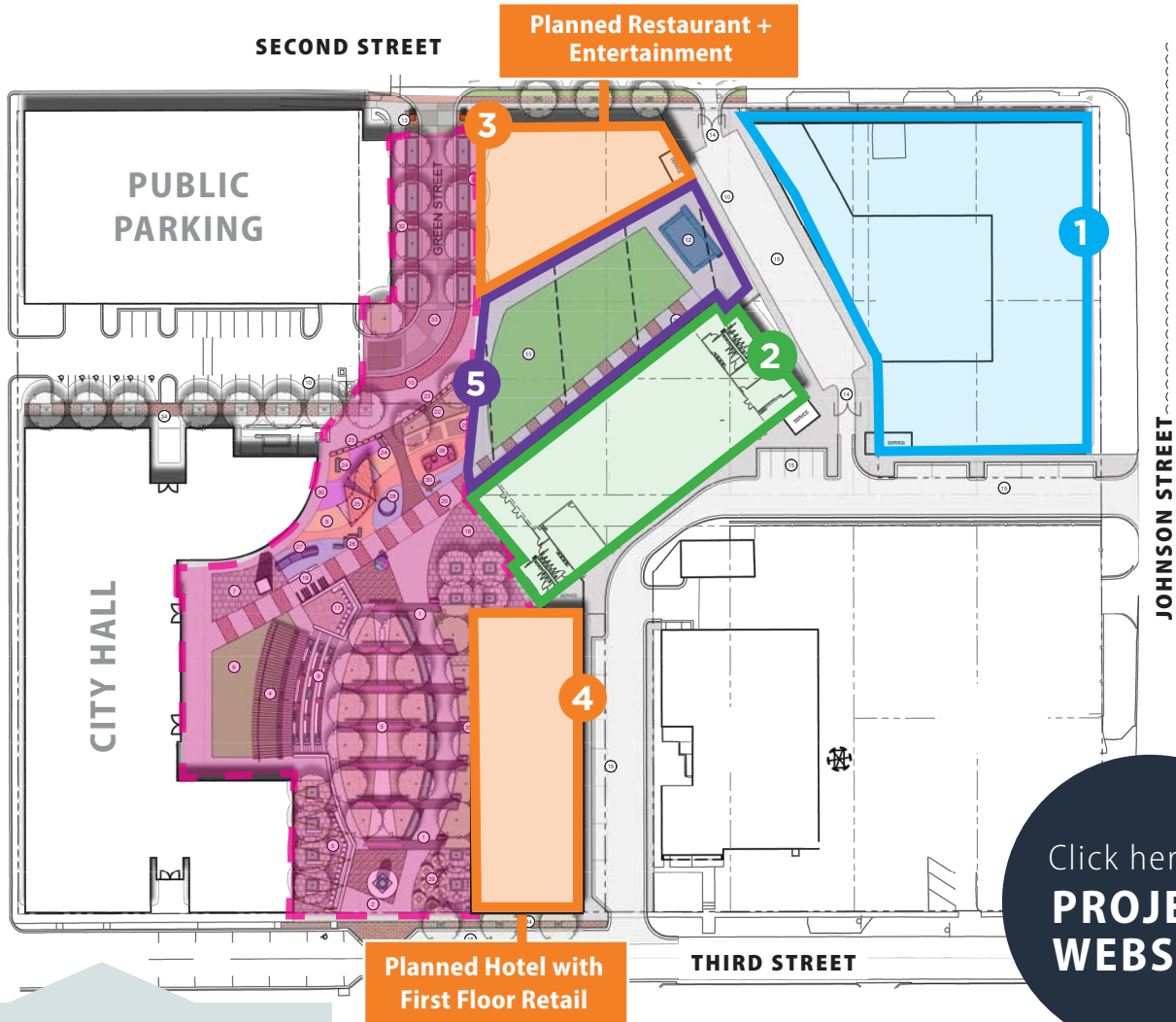


BRANDON BUCKLEY
816.268.9112 / bbuckley@lane4group.com

WESTON BUCKLEY
816.268.9102 / wbuckley@lane4group.com

CHASE GLAESER
816.268.9110 / cglaeser@lane4group.com

PROJECT SITE PLAN



Click here for
**PROJECT
WEBSITE**

Located in the heart of
DOWNTOWN LEE'S SUMMIT



Nationally recognized and
accredited Main Street

- 1** MULTI-FAMILY + DEDICATED PARKING
- 2** FARMER'S MARKET & EVENT SPACE
Breaking Ground Q4 2023
- 3** RESTAURANT/ENTERTAINMENT
3,000 - 10,500 sf available
- 4** FIRST FLOOR RESTAURANT/RETAIL
1,500 - 7,000 sf available (1st floor)
- 5** COVERED OUTDOOR PERFORMANCE AREA
Breaking Ground Q4 2023
- []** CITY HALL/PEDESTRIAN PAVILION
Breaking Ground Q4 2023

DOWNTOWN LEE'S SUMMIT

BY THE NUMBERS



100+

NEW BUSINESSES
SINCE 2009



\$69+ M

RENOVATION INVESTMENT
SINCE 2009



29

FOOD + DRINK
ESTABLISHMENTS



100

SERVICE PROVIDERS



39

RETAILERS



STRONG DOWNTOWN FOOD + ENTERTAINMENT SCENE



Libations



Downtown Programming



Hand in Glove



Third Street Social

PROJECT RENDERINGS



DEDICATED PROGRAMMING

LIVE MUSIC • CIVIC EVENTS • GROUP FITNESS • ARTS & CULTURE • ENTERTAINMENT



FARMER'S MARKET & EVENT SPACE

PLANNED SPRING 2025 OPENING

- Four-season Farmer's Market held Saturdays and Wednesdays
- Market will accommodate indoor/outdoor stalls
- Market city-sponsored programming planned 7-days-a-week including yoga, live music, children's programming, act shows, etc.
- Event space to host year-round conferences, weddings, luncheons, etc.
- Event space retractable door shared with Farmer's Market



Programming Inspiration

PROPOSED FOOD HALL/RESTAURANT

3,000 - 10,500 SF • AVAILABLE SPACE + ROOFTOP PATIO



ACTION

- Prominence in Lee's Summit's most anticipated mixed-use development
 - *Farmer's Market & Event Space, Pedestrian Pavilion, and Outdoor Performance Area planned for Spring 2025 opening*

ENVIRONMENT

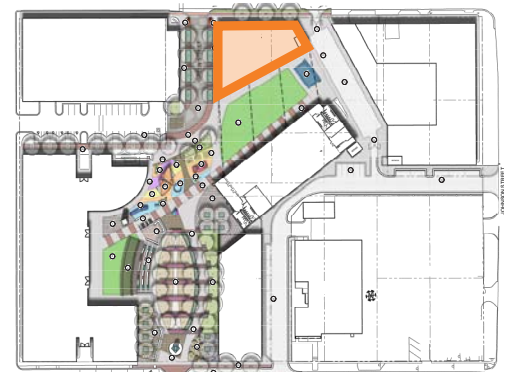
- Adjoins covered Outdoor Performance Area with live events throughout the year
- Four-season Farmer's Market occurs bi-weekly with downtown festivals, corporate events, weddings, etc. held year round
- Located across from City Hall in the bustling Downtown Lee's Summit
- Use of the green space under the covered Outdoor Performance Area

FLEXIBILITY

- Opportunity to collaborate on building design including anticipated outdoor patio area
- Potential to work collaboratively with programming and public events; events will range in size, space used, and targeted demographics

DENSITY

- Located in dense development with foot traffic from urban multifamily community and boutique hotel
- Live events throughout the year and 7-day-a-week City-sponsored programming planned for adjacent Outdoor Performance Area and Event Space



PROPOSED BOUTIQUE HOTEL + RETAIL

**HOTEL OPPORTUNITY • 60-80 ROOMS
1,500 - 7,000 SF • FIRST FLOOR RETAIL/RESTAURANT**



LOCATION

- Situated in the heart of historic Downtown Lee's Summit at the gateway to a prominent new mixed-use project
- *Farmer's Market & Event Space, Pedestrian Pavilion, and Outdoor Performance Area planned for Spring 2025 opening*

EVENT SPACE

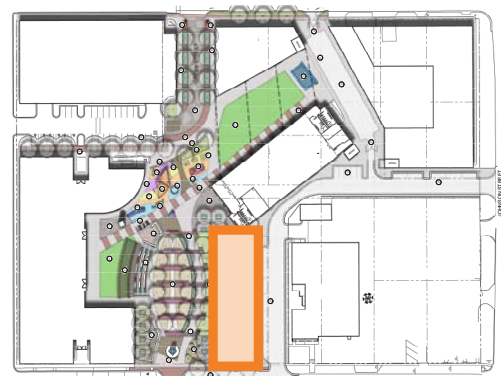
- Planned connection to and use of indoor event space
- Perfect for conferences, weddings and other major events

ACTIVITY

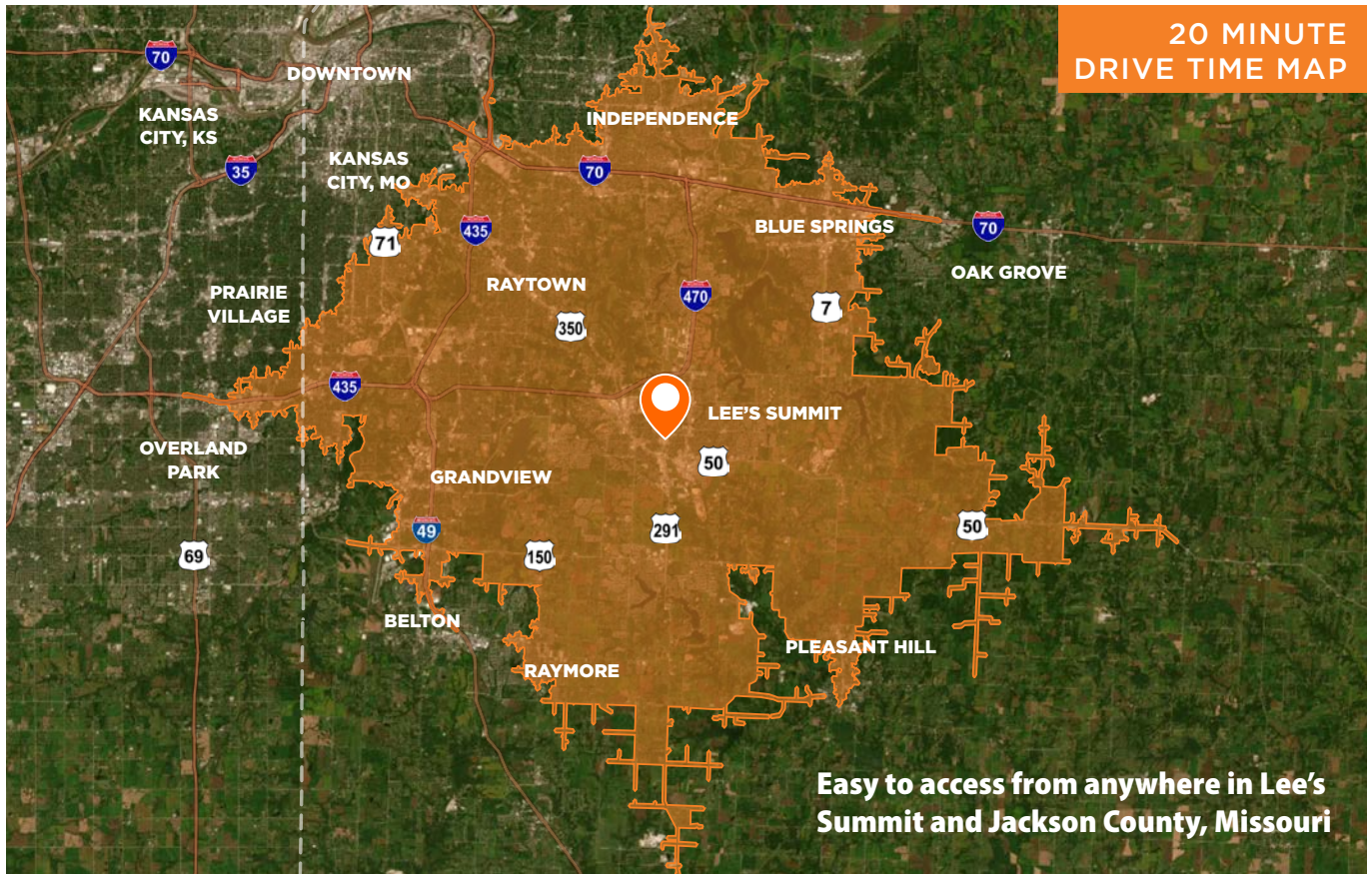
- Next to planned four-season Farmer's Market and covered Outdoor Performance Area with year-round live events plus 7-day-a-week City-sponsored programming
- Multiple festivals hosted each year

ACCESSIBILITY

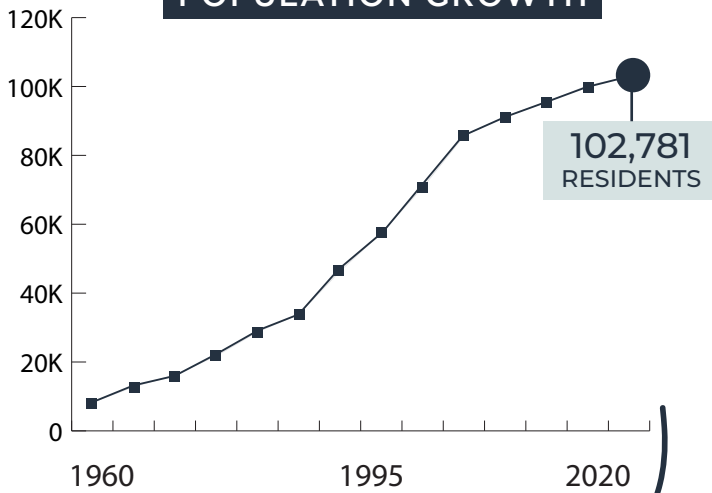
- Easy to access from anywhere in Lee's Summit and Jackson County, MO, the most populated county in the Kansas City MSA
- 20 minute drive to downtown Kansas City



LEE'S SUMMIT GROWTH AND ACCESSIBILITY



LEE'S SUMMIT POPULATION GROWTH



POPULATION HAS MORE THAN DOUBLED SINCE 1990

Population is expected to reach 112,000 by 2029

RECENT ACCOLADES + AWARDS



2023 Best Place to Live in US
Livability



#14 on 50 Best Places to Live for Families in 2023
Fortune



Great Places in America (2019)
American Planning Assoc.