



VIEW  
VIRTUAL  
TOUR



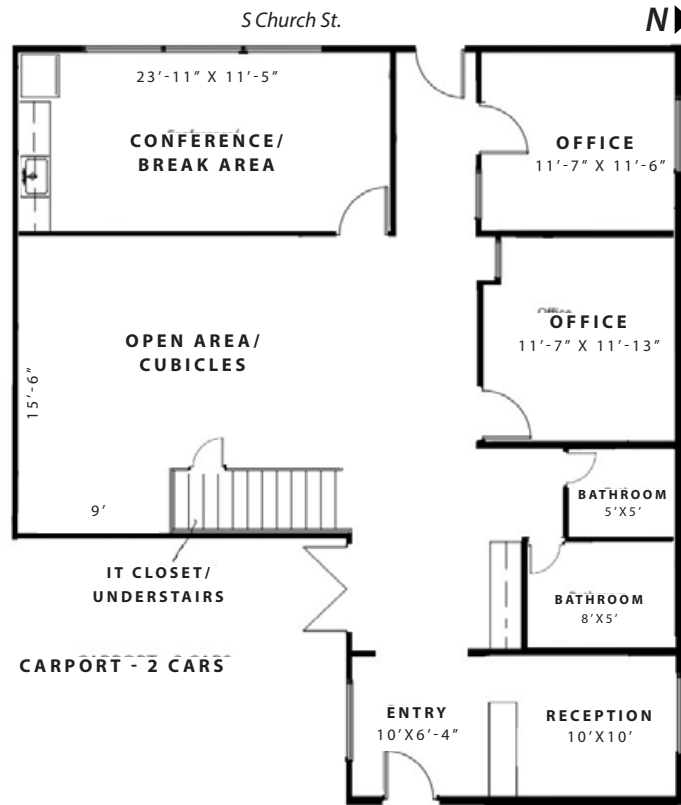
**2,200 SF**  
**AVAILABLE**

## 901 E. LOULA - OLATHE, KS

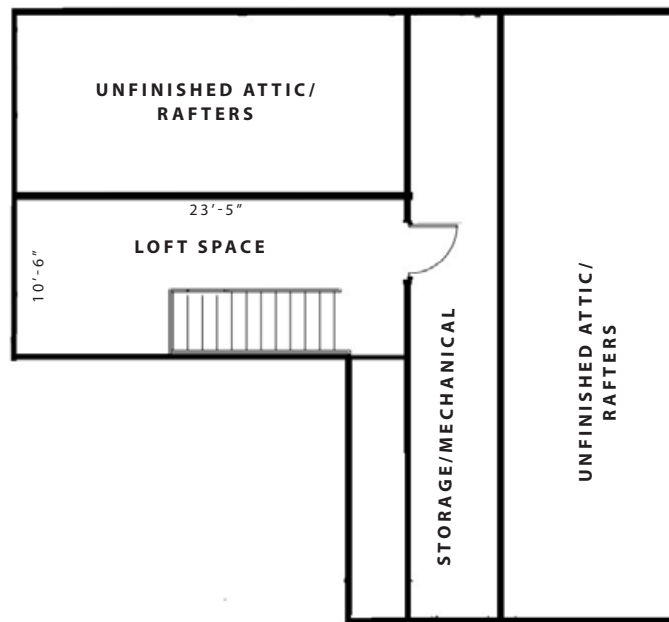
### OFFICE BUILDING FOR SALE OR LEASE

- **2,200 SF** available with 8 parking spaces; 2 in carport
- Building includes a reception area, conference/break room, 2 offices, and an open space for cubes
- Completely remodeled in 2007; restrooms remodeled in 2023
- Convenient location near Downtown Olathe with easy access to Santa Fe and I-35
- Roof, HVAC and fire alarm system installed in 2008

# SITE PLAN



**2,200 SF**  
1<sup>st</sup> Floor

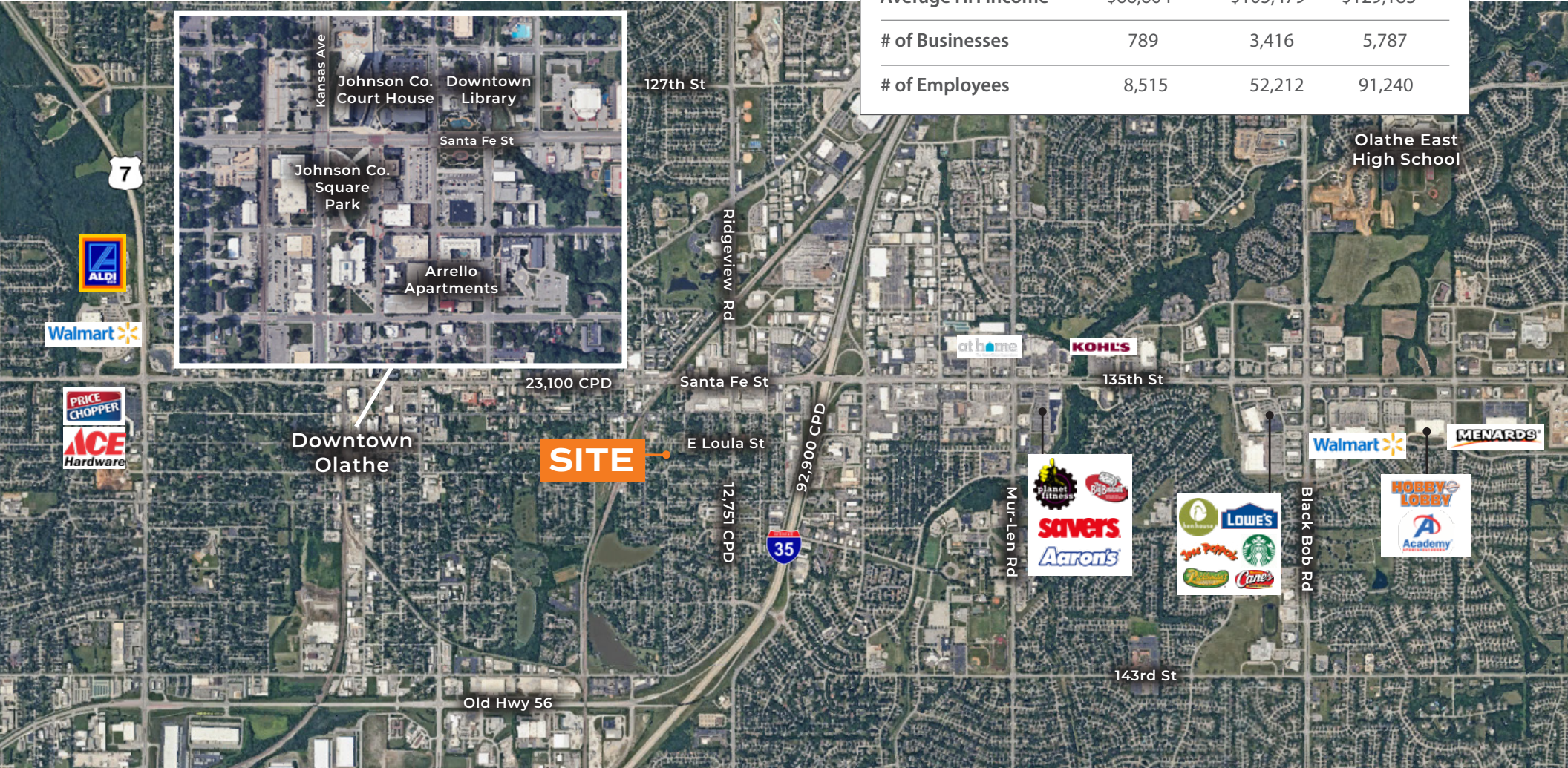


2<sup>nd</sup> Floor



# AREA SUBMARKET

DEMOGRAPHICS	1 MILE	3 MILE	5 MILE
Population	11,687	94,021	170,525
Average HH Income	\$66,604	\$105,479	\$129,183
# of Businesses	789	3,416	5,787
# of Employees	8,515	52,212	91,240



901 E LOULA ST • OFFICE SPACE • OLATHE, KS