

# LANE4

## DOWNTOWN OLATHE REDEVELOPMENT



CHERRY STREET & SANTA FE DR, OLATHE, KS

### Retail and Restaurant Opportunities

1,893 - 7,225 SF FOR LEASE



# TRANSFORMATIVE REDEVELOPMENT PROJECT

in the heart of Downtown Olathe

1,893 - 7,225 SF FOR LEASE

- **Lease Rate: \$28.50/SF + \$5.00 NNN**
- Located in a growing downtown of a vibrant Kansas City suburb
  - *Since 2020: 5.95% population growth*
  - *2010-2020: 12.5% population increase*
- Project adjacent to Johnson County Square Park, a central meeting location for events with stage, garden, and sculptures
- **80-90 engaging community events annually** including Fourth Fridays, Old Settlers, Farmer's Market, Arts Festival etc.
- Strong daytime population: 84,000 people (3 mi)

**SPENCER STEWART**

816.268.9103 / sstewart@lane4group.com



Adjacent to the new stage at the redeveloped Johnson Co. Square Park

**NEW LOCAL CONCEPTS**  
coming to Downtown Olathe:

**CHARBAR**



**LANE4**



# SIGNIFICANT INVESTMENT COMPLETED

exceeding \$250 million



- 1 Olathe Downtown Library
- 2 Johnson Co. Court House & City Hall
- 3 Johnson Co. Square Park
- 4 Arrello Apartments - 228 Units

**WATCH**  
how Downtown  
Olathe is  
transforming



Downtown Olathe Library



Johnson Co. Courthouse



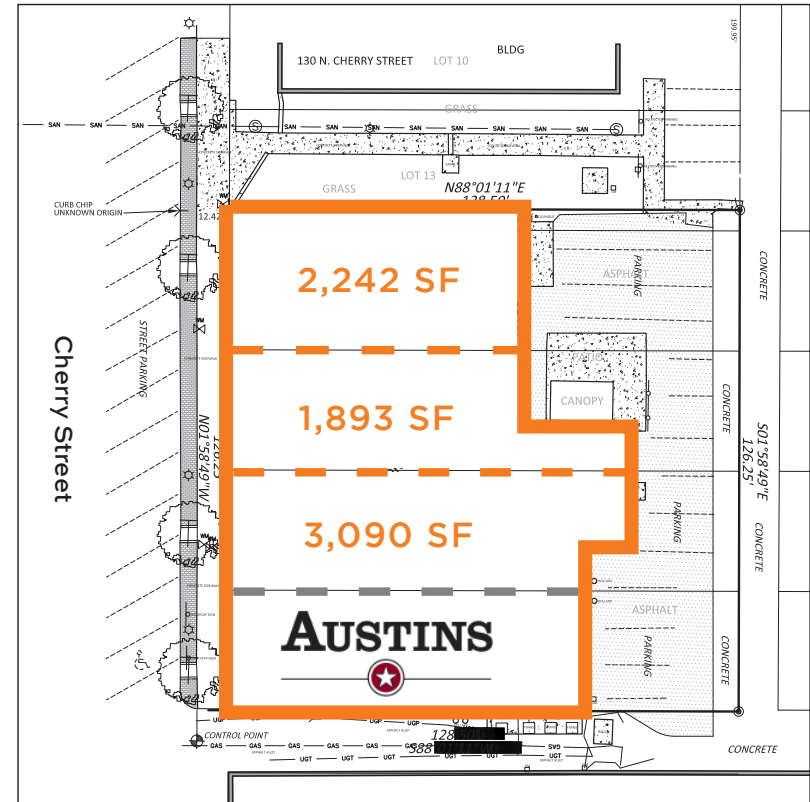
Arrello Apartments - 228 Units



Johnson Co. Square Park



## SITE PLAN

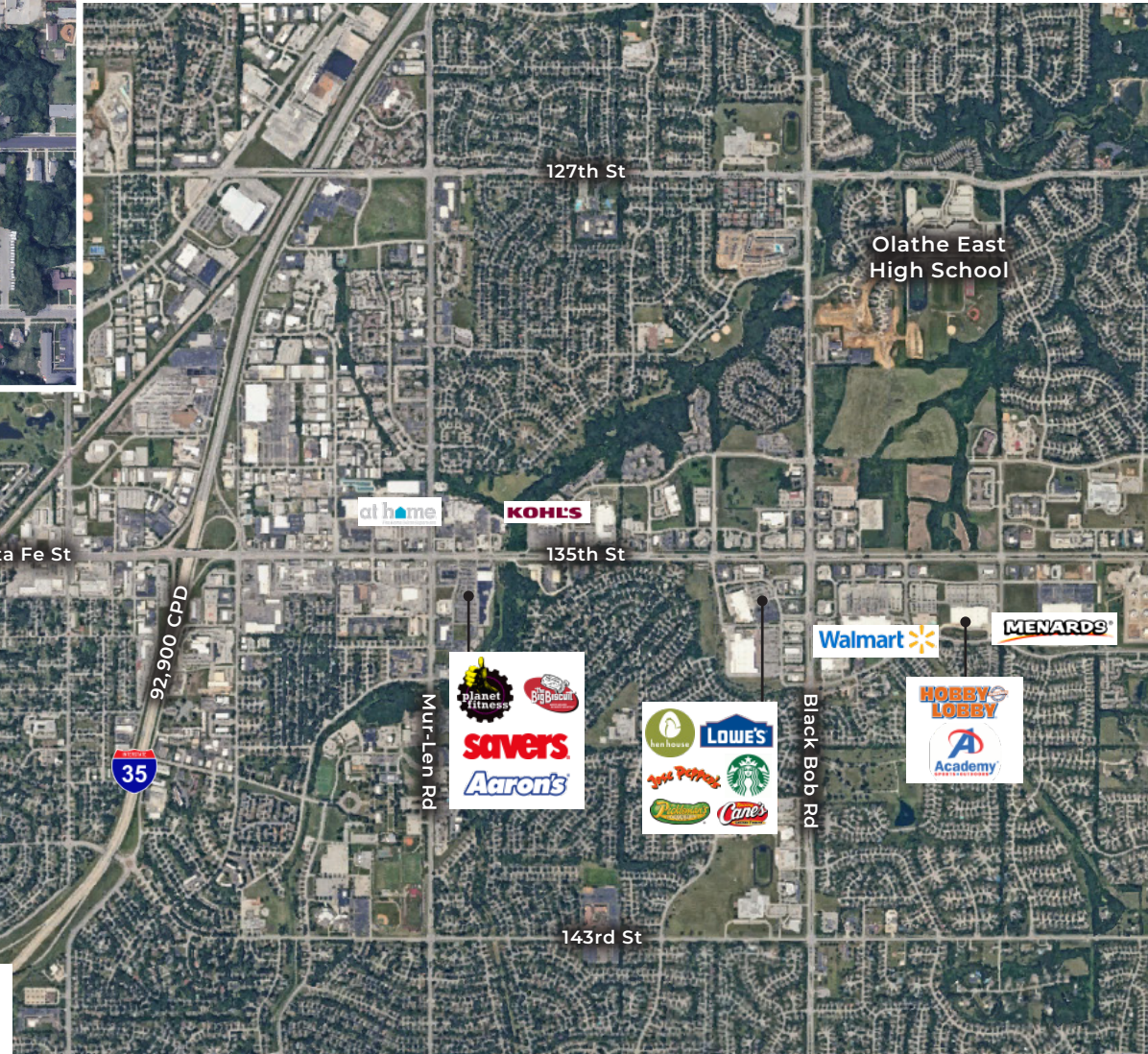
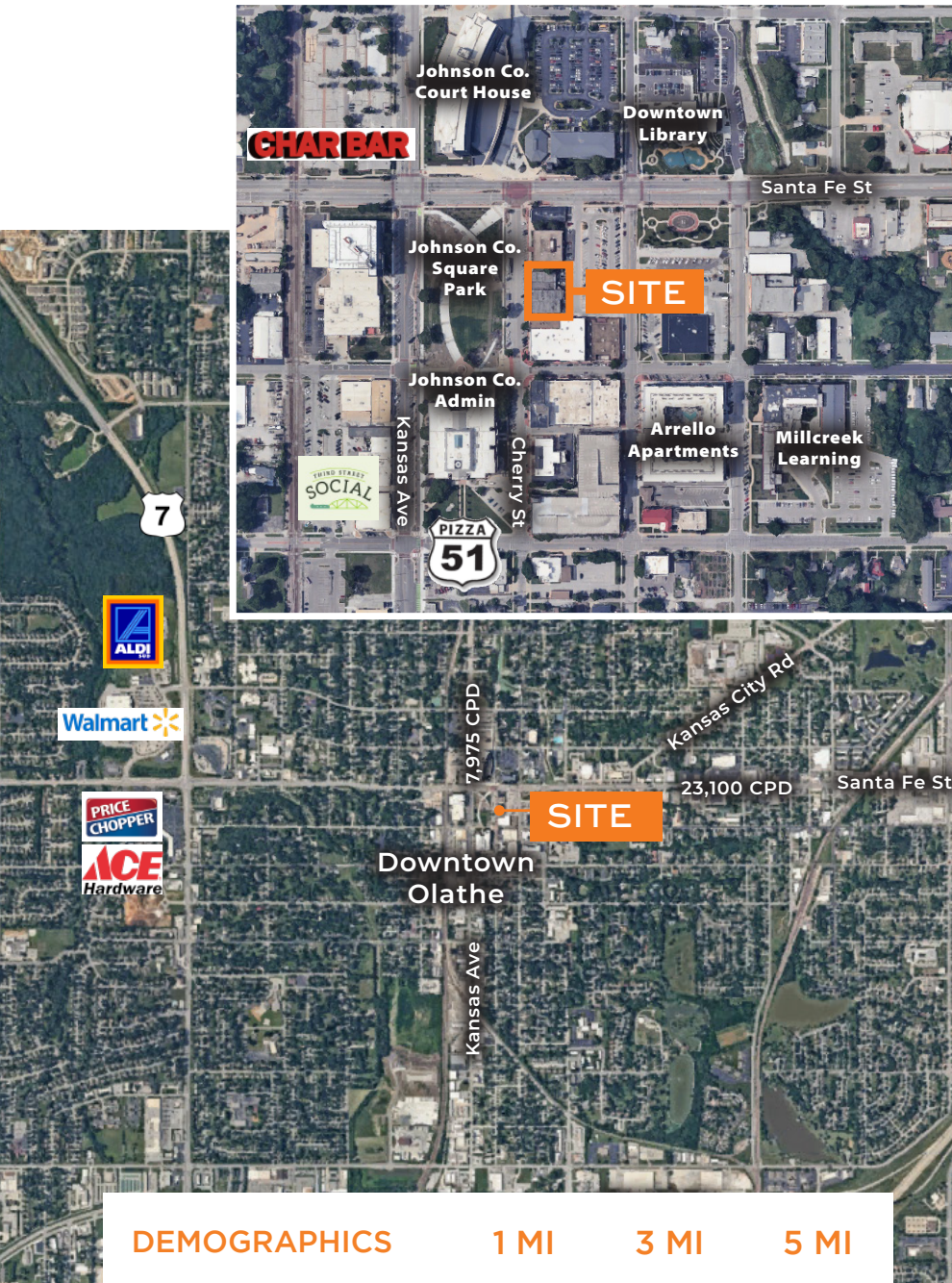




 **DEDICATED  
PARKING**



## DOWNTOWN OLATHE MARKET



DEMOGRAPHICS	1 MI	3 MI	5 MI
Population	12,330	83,068	158,276
Average HH Income	\$65,985	\$117,471	\$142,927
Daytime Population	11,796	84,219	154,011