

Flexible Sites for Sale

# Paola Land

HWY 69 & BAPTISE DR | PAOLA, KS

**1-117 AC**



## Property Highlights

- Land for sale, flexible configurations
- Located across from Miami County Medical Center; an Olathe Health System Hospital with 39 beds and 24-hour emergency care
- Immediate access to 169 Hwy
- Economically secure community with an unemployment rate of just 2.4%, 88% lower than the state average

**ANDREW SANDBURG**  
816.268.9111 | [asandburg@lane4group.com](mailto:asandburg@lane4group.com)

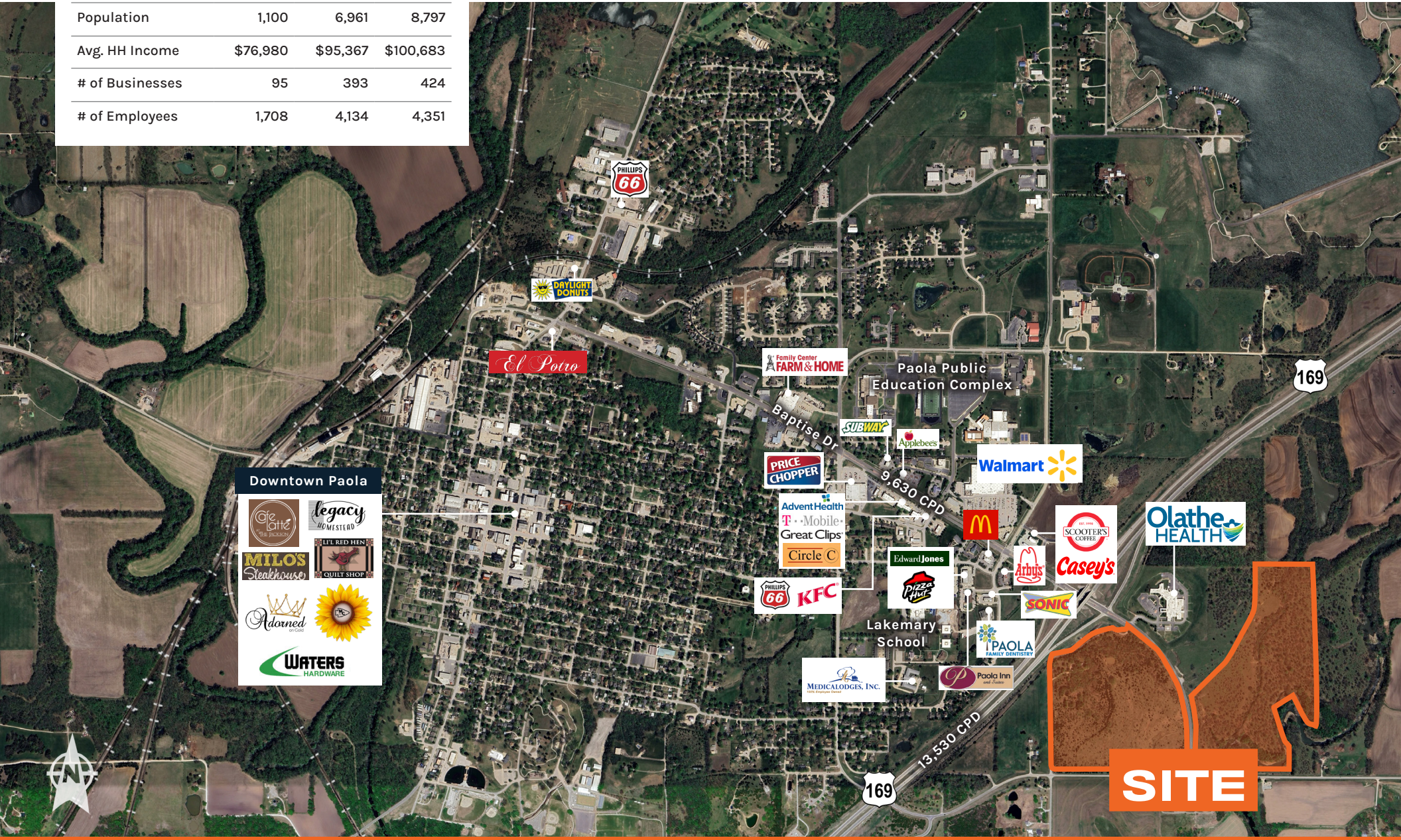
**SPENCER STEWART**  
816.268.9103 | [sstewart@lane4group.com](mailto:sstewart@lane4group.com)

**LANE4**

# Aerial Overview

Demographics      1 MI.      3 MI.      5 MI.

Population	1,100	6,961	8,797
Avg. HH Income	\$76,980	\$95,367	\$100,683
# of Businesses	95	393	424
# of Employees	1,708	4,134	4,351



**Downtown Paola**

- Cafe Latte
- Legacy Homestead
- MILOS Steakhouse
- LITL RED HEN QUILT SHOP
- Adorned
- WATERS HARDWARE

*El Potro*

**SITE**

