



1,250 SF
AVAILABLE

Oak Barry Center

RETAIL SPACE FOR LEASE

500 NE BARRY RD | KANSAS CITY, MO

ANDREW SANDBURG
816.268.9111 / asandburg@lane4group.com

Property Highlights

- 1,250 SF for lease
- Grocery and fitness anchored shopping center
- Ample parking with 4.79 stalls per 1,000 SF
- Strategically located between Platte & Clay county, one of the **fastest growing submarkets in the region** with a **combined 18% growth rate between 2019 and 2024**
- Sits at the NE corner of Barry Road & North Oak Trafficway seeing 14,500 CPD

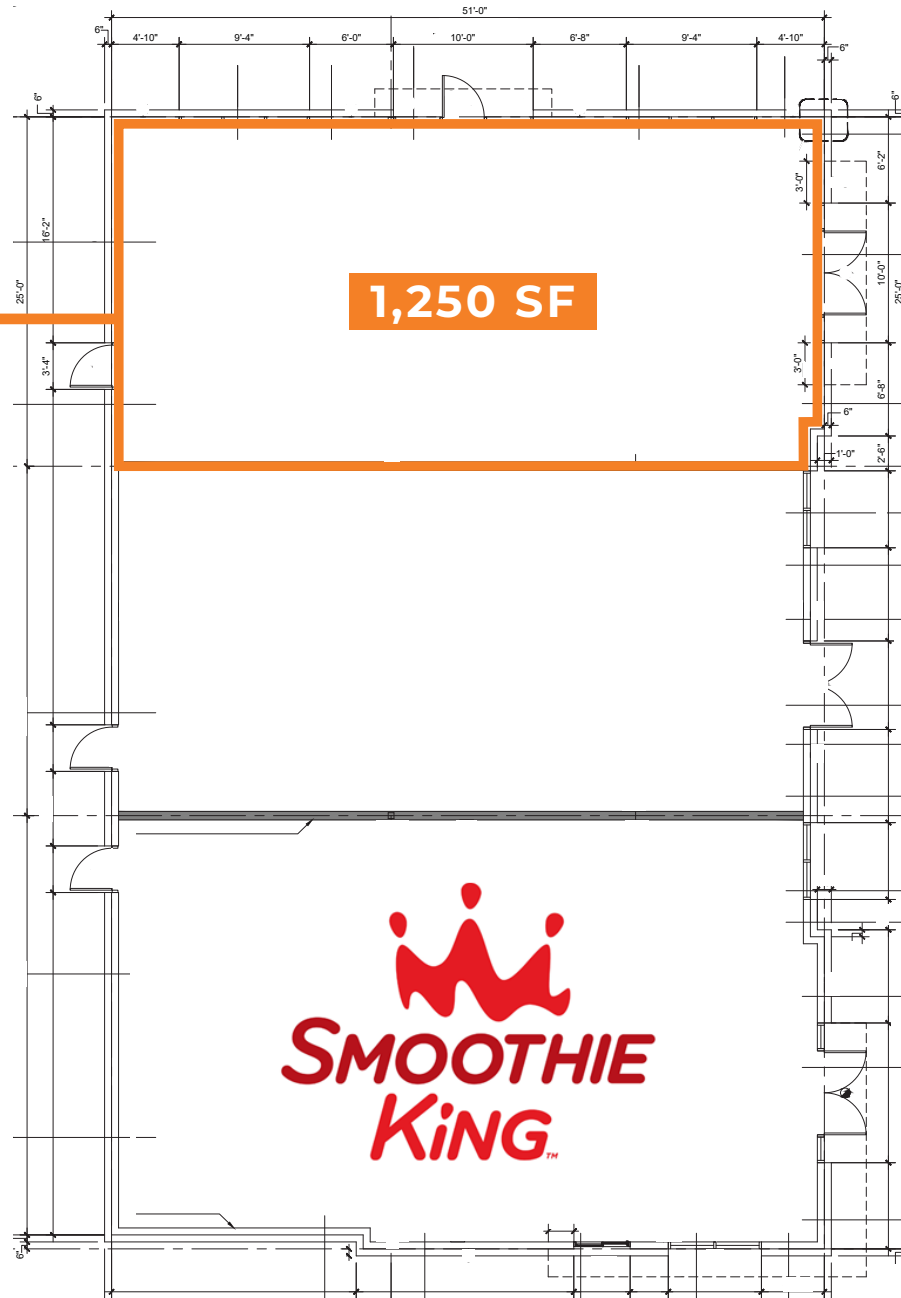
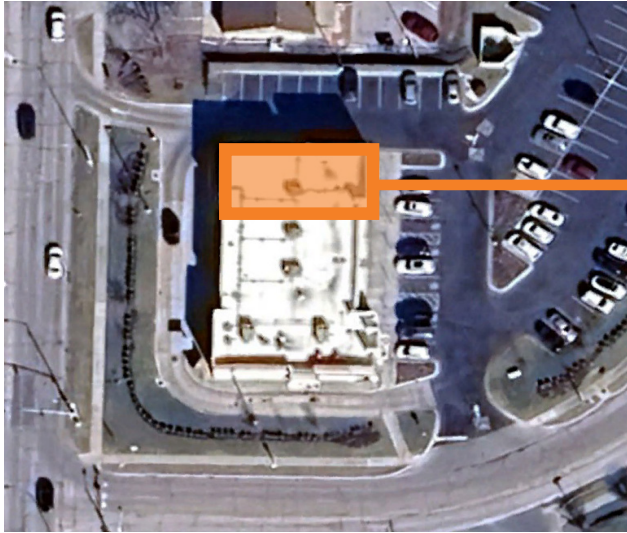
Demographics	1 MI.	3 MI.	5 MI.
Population	7,371	68,572	158,842
Avg. HH Income	\$88,725	\$108,207	\$110,832
# of Businesses	325	1,378	3,772
# of Employees	4,052	14,102	41,360



	Annual Visits	Ranking Index Based on Visits
Price Chopper	1M	3/31 in Missouri
Planet Fitness	506K	6/37 in Missouri
Dollar Tree	205.8K	10/191 in Missouri



Floor Plan



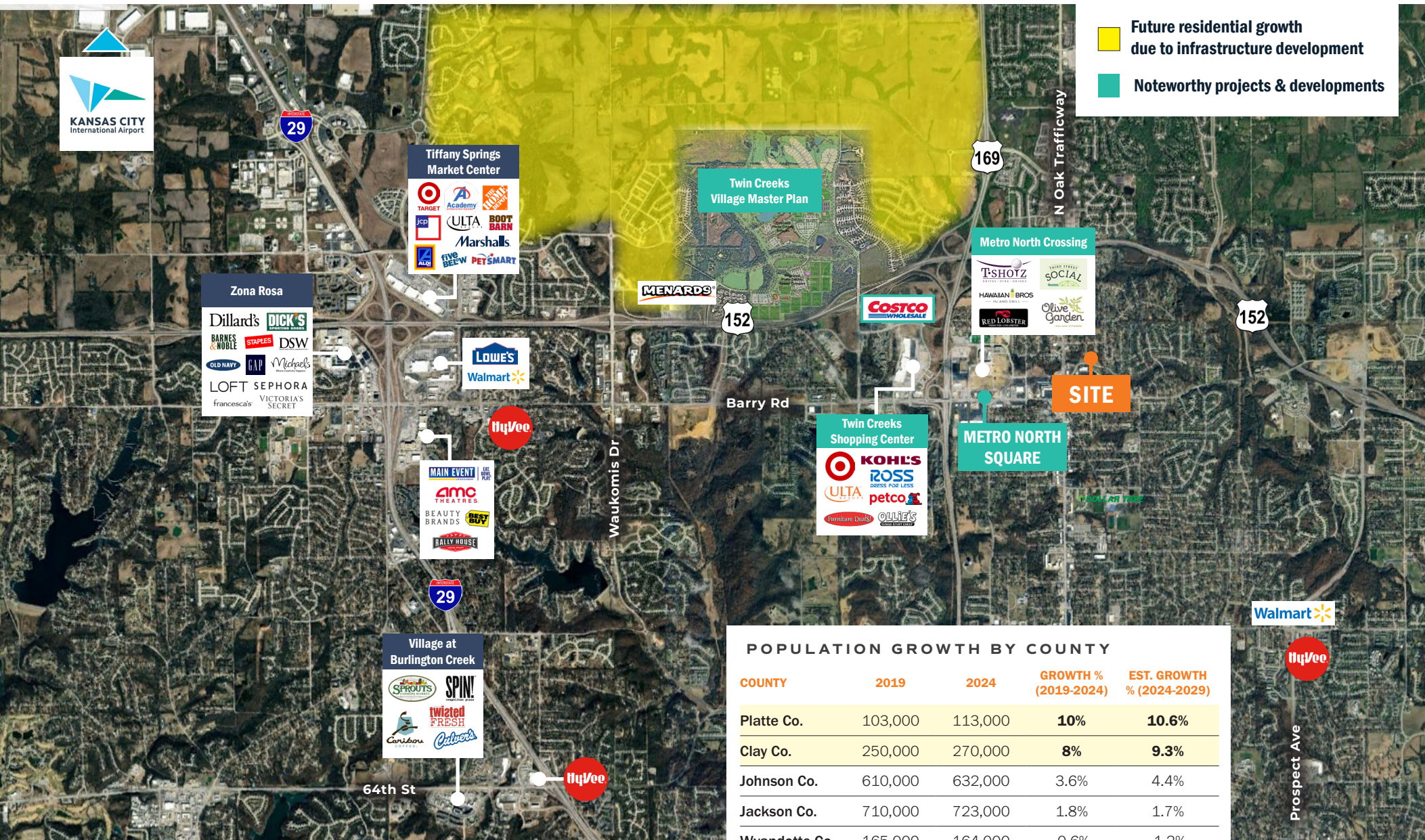
Oak Barry Center

LANE4



Market Aerial

LANE4



POPULATION GROWTH BY COUNTY

COUNTY	2019	2024	GROWTH % (2019-2024)	EST. GROWTH % (2024-2029)
Platte Co.	103,000	113,000	10%	10.6%
Clay Co.	250,000	270,000	8%	9.3%
Johnson Co.	610,000	632,000	3.6%	4.4%
Jackson Co.	710,000	723,000	1.8%	1.7%
Wyandotte Co.	165,000	164,000	-0.6%	-1.2%

U.S. Census Bureau