



**3,000 SF**  
**AVAILABLE**

# LOUISBURG RESTAURANT SPACE FOR SUBLEASE

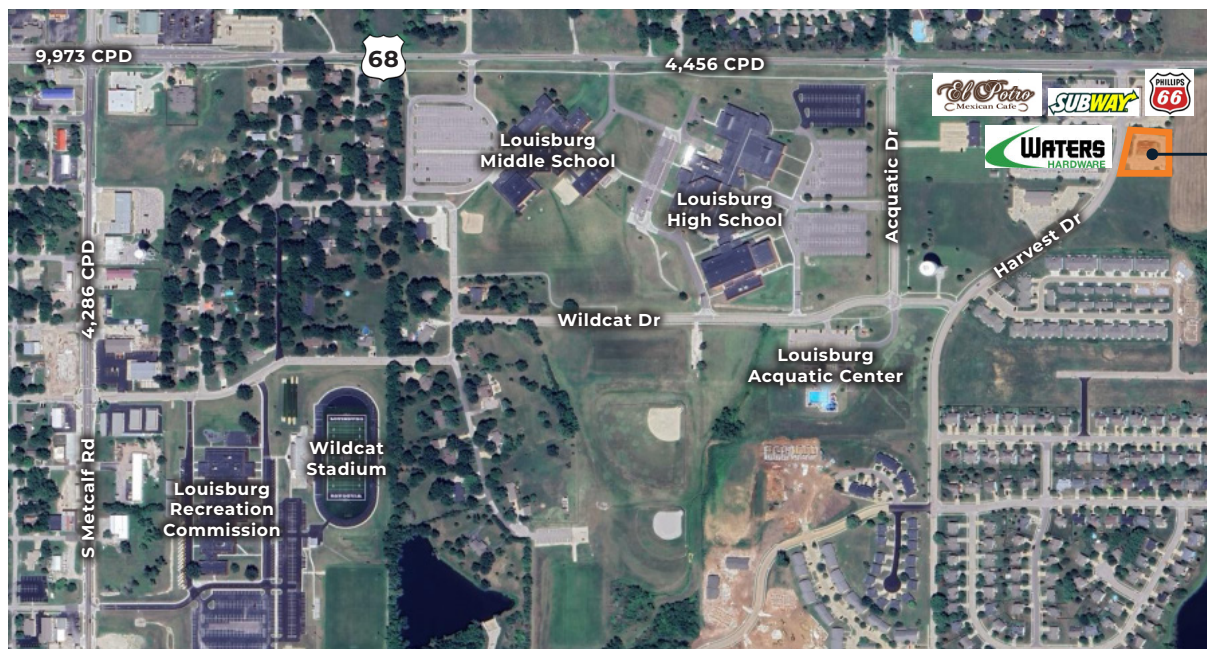
125 HARVEST DR • LOUISBURG, KS

**CHASE GLAESER**

816.268.9110/cglaeser@lane4group.com

**SPENCER STEWART**

816.268.9103/sstewart@lane4group.com



## PROPERTY HIGHLIGHTS

- 3,000 SF former Pizza Hut
- 12+ years term remaining (*absolute NNN*)
- 0.5-miles from Louisburg High School and Middle School
- Ability to add drive-thru
- Average household income of \$100,00+ within 1-mile of location



DEMOGRAPHICS	1 MI	3 MI	5 MI
Population	2,015	6,263	8,412
Avg. HH Income	\$110,037	\$102,217	\$111,672
# of Businesses	58	213	257
# of Employees	469	1,784	2,169

## MARKET AERIAL



## PROXIMITY TO KANSAS CITY

