

*Move-In Ready Medical Office Space*

# Corporate Lakes

6807 W 121ST ST | OVERLAND PARK, KS

2,753 SF



**ADAM ABRAMS, CCIM**

816.268.7565 | [aabrams@lane4group.com](mailto:aabrams@lane4group.com)

**LANE4**

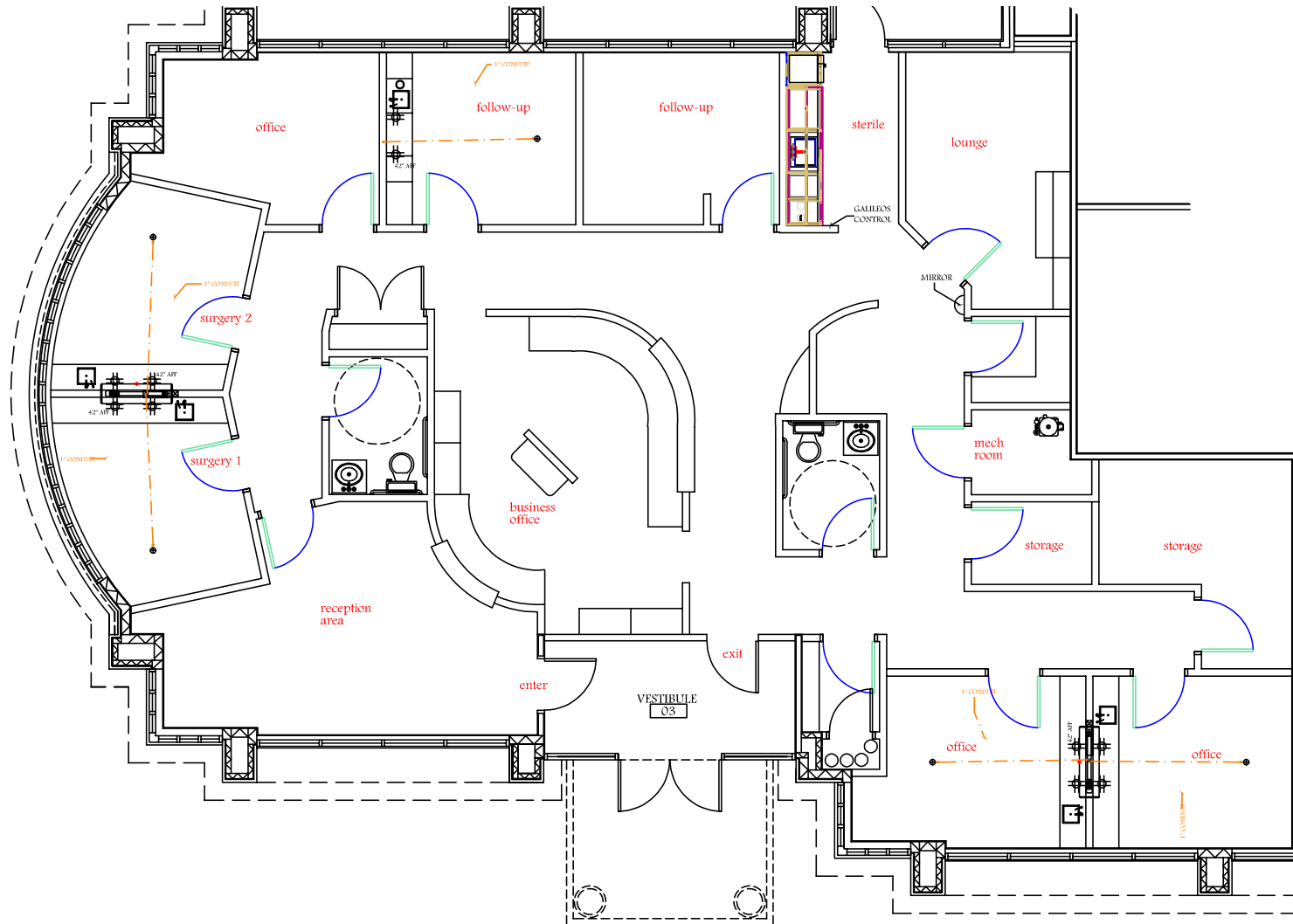
# Property Highlights

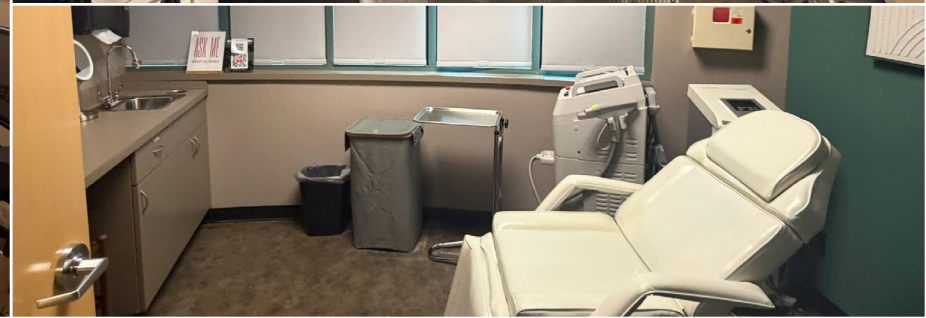
- 2,753 SF move-in ready medical office space
- Located in Corporate Lakes
- Available July 1, 2026
- Exterior signage available
- Direct entry into the space

Demographics	1 MI.	3 MI.	5 MI.
Population	8,694	89,776	241,563
Avg. HH Income	\$136,444	\$159,362	\$152,558
# of Businesses	749	7,127	12,778
# of Employees	11,191	91,620	154,659



# Floor Plan





# Neighborhood Aerial

